

## Donation Form

Please accept my gift of: \$ \_\_\_\_\_

Sponsorship Type \_\_\_\_\_

Name \_\_\_\_\_

Address \_\_\_\_\_

City / State / Zip \_\_\_\_\_

Phone \_\_\_\_\_

Email \_\_\_\_\_

Credit card # \_\_\_\_\_

Exp. Date: \_\_\_\_\_ CIV: \_\_\_\_\_

Signature \_\_\_\_\_

**Checks Payable to:** CASA Kane County  
Please list your granite/brick message below. Characters include letters, numbers, spaces and punctuation:

**Clay Brick (4x8) (3 lines of 18 spaces)**

-----  
-----  
-----

**Granite Paver (12x16) (5 lines of 23 spaces)**

Please contact the CASA office  
for an order form.

Please return this form to:  
CASA Kane County, 100 S. Third Street, Geneva, IL 60134  
Fax: 630-232-4562 • Phone: 630-232-4484  
www.casakanecounty.org

## WHO IS CASA Kane County

It is the only child advocacy nonprofit organization in the county that recruits, trains and manages community volunteers to serve as Court Appointed Special Advocates (CASA) for children who are in court due to abuse, neglect and private guardianship. The 16th Judicial Courts rely on our CASA/GAL volunteers to provide objective and accurate information regarding the child's history, current situation and special needs.

### Our Mission

CASA Kane County is a nonprofit volunteer organization that advocates for the best interests of abused and neglected children within the Juvenile Court system.

### Our Vision

We believe that every child has the right to a safe, nurturing, and permanent home; and deserves the support and involvement of their community to make this all possible.

Donations can also be made online.  
For more information, please visit  
our website at:

[www.casakanecounty.org](http://www.casakanecounty.org)

or call

630-232-4484

**I am for the child.™**

## LEAVE A Meaningful Message

A lasting tribute or naming opportunity from a bench to a brick will provide a unique commemorative occasion to honor or thank someone you care about. Whatever the purpose, you are leaving a lasting tribute.

Your gift to the *Grow a Healthy Child Garden* will honor all abused and neglected children that we serve and the CASA/GAL volunteers who are making it possible.

Thank you,



**Gloria Bunce**

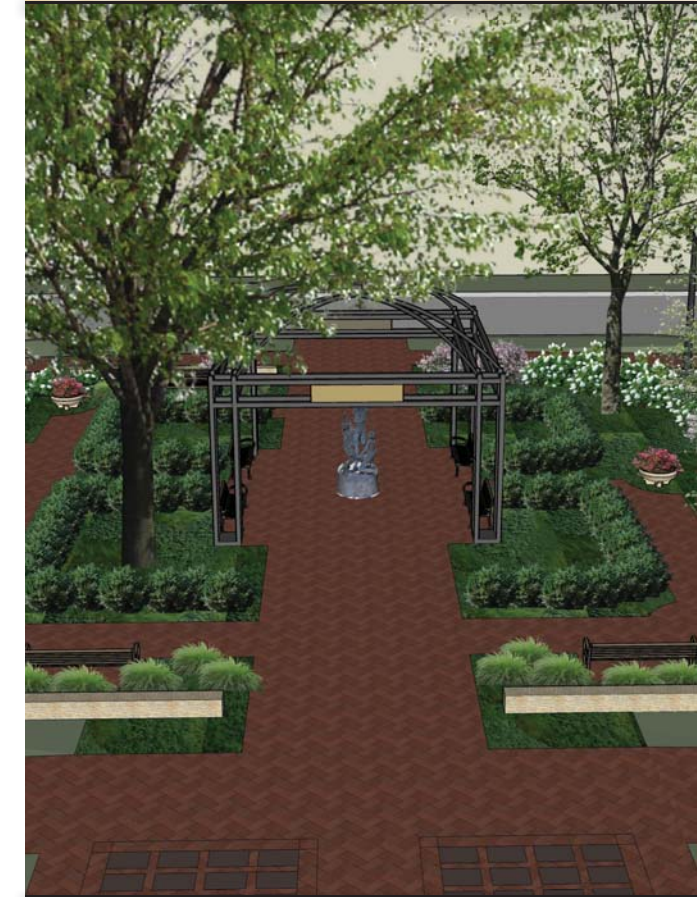
Executive Director



*"The heart is like a garden.  
It can grow compassion or fear, resentment  
or love. What seeds will you plant there."*  
-Jack Kornfield



## THE CASA KANE COUNTY GROW A HEALTHY CHILD GARDEN



**Leave a Legacy**  
*My hope still is to leave  
the world a bit better  
than when I got here.*

-Jim Henson



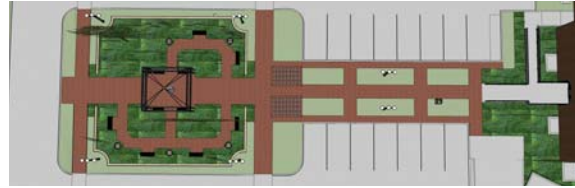
## IT'S ABOUT LEAVING A Legacy

The garden is a result of a great partnership with the Judiciary and CASA Kane County. The original vision for the initiative came from the Executive Director and several board members and donors. She formed the Steering Committee – involving CASA board members, judicial partners and donors who then developed a shared vision of surrounding the courthouse property for all those to enjoy.

This project would not have been possible if it were not for Pamela Self, Landscape Architecture, Ltd. and Bob Stell, owner of Evergreen Landscape who were selected as the managing partners in late 2011. “At CASA Kane County, creating a beautiful garden, while providing a new healing environment was something that was meant to happen. We value the legacy that this garden will provide for the many people who visit the courthouse.” says Dan Dolan, Co-Chair.

*There are many generous donors and supporters of the Grow a Healthy Child Garden and Endowment Fund who will be recognized on a special naming plaque located in the garden.*

## THE CASA KANE COUNTY Grow a Healthy Child Garden



CASA Kane County is proud to unveil the *Grow a Healthy Child Garden* that will provide a beautiful place where people in our community, visitors to the courthouse and families can find beauty, peace and hope for healing.

The 4,100 square foot garden will be located at the entrance of the Kane County Courthouse in Geneva. It will provide an intimate space that offers a walk of engraved pavers, serene perennials, comfortable benches and landscaping. There are multiple naming opportunities for organizations and individuals to leave a lasting tribute that can be engraved with wording that you select.

## THE CASA KANE COUNTY Endowment Plan

All gifts from the garden project are allocated to the Grow a Healthy Child Program and Endowment Campaign that will meet emergent needs for CASA Kane County to serve 100% of all abused and neglected children in our service area.



*“I value the CASA Kane County Program and invite you to join others in becoming a permanent part of the Garden through your giving. Experience the joy of giving to a common goal with others so that we may continue to always be a Powerful Voice in a Child’s Life.”*

**Randy Meridith, Campaign Co-Chair**

## NAMING OPPORTUNITIES Brick Guidelines

Payment must accompany each order, and you will receive an acknowledgment letter of receipt. All text will be standard size, font, and style. Spaces between words, names and dates will count as characters. All messages are to be approved by the CASA Kane County office. Please use one form per order.

**CLAY BRICKS** \$150 (1500 available)  
Displayed throughout the garden area.

**GRANITE PAVERS** \$1,000 (64 available)  
Displayed in two prominent areas outside the main walkway.

**NEW TREES** \$2,500 (5 available)  
Planted within the garden areas for height variation and shade.

**WASTE RECEPTACLES** \$2,500 (5 available)  
Discreetly located throughout the garden areas to help maintain cleanliness.

**TABLE AND CHAIRS** \$5,000 (5 available)  
Situated throughout the Courthouse grounds for individuals to enjoy the outside.

**MATURE TREES** \$5,000 (2 available)  
Surrounded by perennials within the garden.

**GARDEN PLANTER** \$5,000 (9 available)  
Located at the corners of the garden and noted with a garden stake (800 lbs).

**BENCHES** \$7,500 (16 available)  
Placed throughout the garden areas and around the Courthouse. (10 in garden, 6 in front)

**STATUE** \$50,000 (1 available)  
Designed by a local artist and located under the pergola at the center of the garden.

**PERGOLA** \$100,000  
(1 available or split into 4 for \$25,000 each)  
Centered within the garden and compliments the dome of the historic Courthouse.

